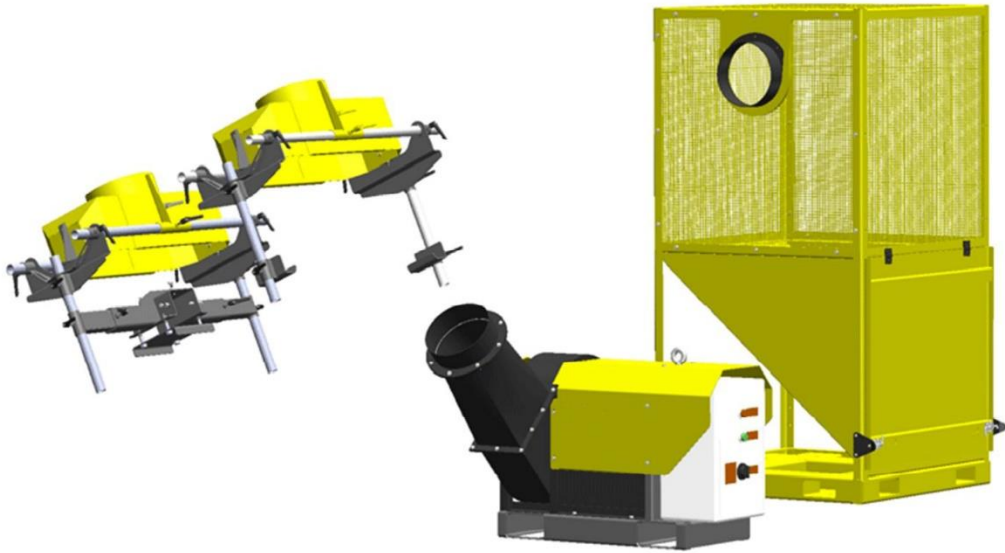


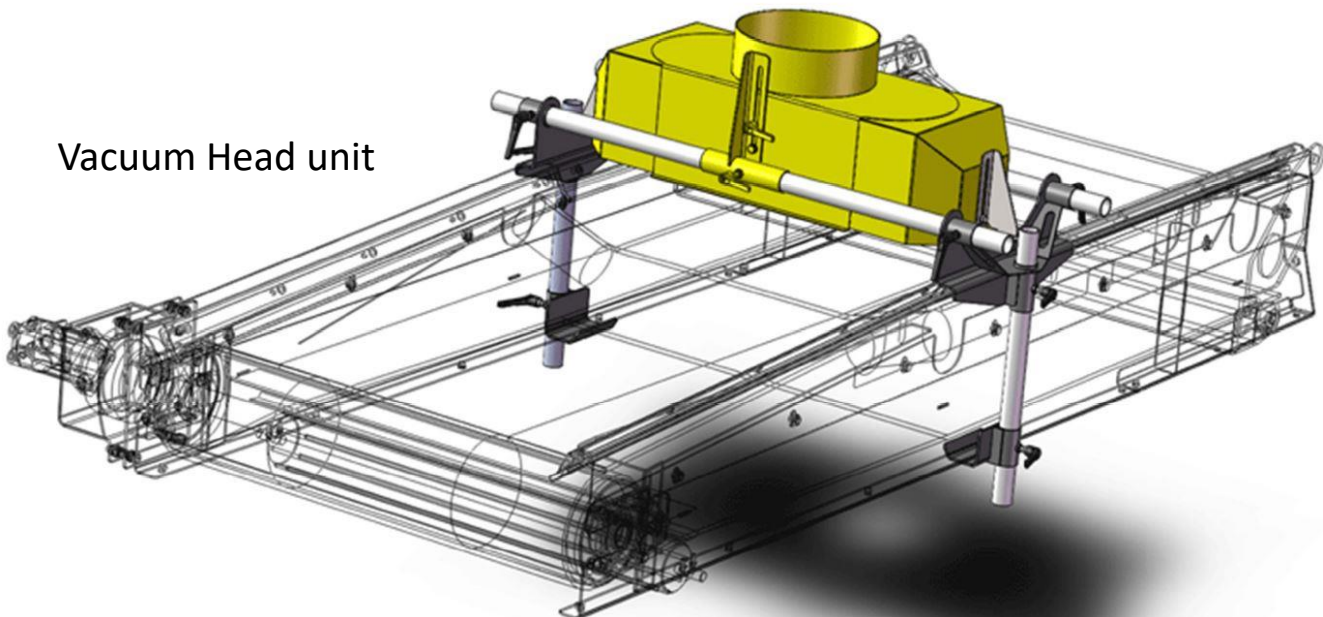
AIR VAC 1200

Compact yet efficient lights recovery separation systems comprising an adjustable vacuum head unit fitted to the fines stockpile conveyor, a freestanding vacuum fan unit and a lights recovery cage. Suitable for removal of plastic or lights contamination from Compost, Bark, skip waste rejects and recycled aggregates.

The Airvac 1200 features 15Kw high energy suction unit; on-board electrical control panel; infinitely variable vacuum control; choice of vacuum drive systems; quick and easy recovery cage emptying; universal fit conveyor att:



Vacuum Head unit

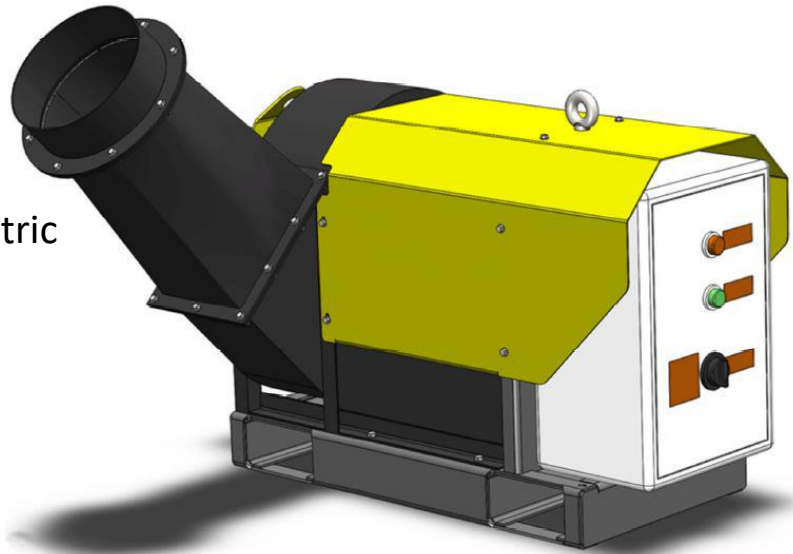


- Adjustable brackets to suit most conveyor frames
- For belts widths from 750-1200mm wide
- No drilling or welding required to fit
- 12" flexi air hose connection to fan unit

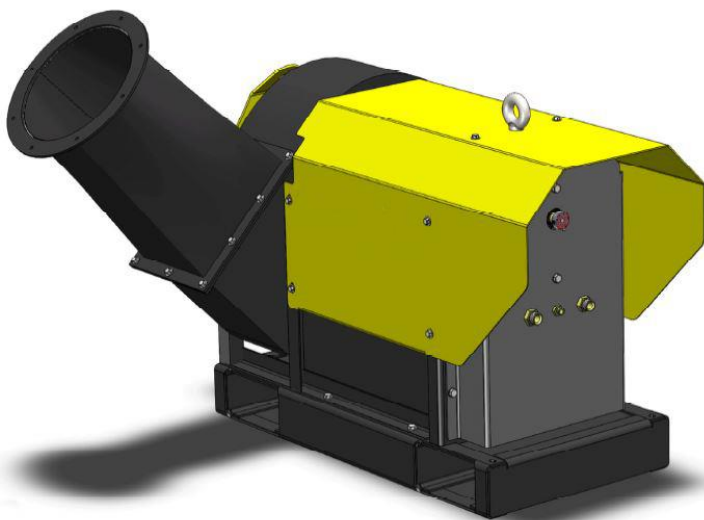
AIR VAC 1200

Suction Fan Unit, Electric

- Length: - 1 320mm
- Width: - 1 140mm
- Height – 1 070mm
- Weight: - 412 Kg



- 415V, 3-Phase 15 kW 2-pole electric drive motor
- Optional direct- drive silent-pack Perkins diesel engine
- Optional direct-drive hydraulic system & couplings
- 12" Flexi Air Hose connections to Vacuum Head & Lights Recovery Cage
- Forklift pockets fitted for ease of movement



Suction Fan Unit, Hydraulic

- Length: - 1 280mm
- Width: - 1 140mm
- Height –1 070mm
- Weight: - 398 Kg
- 20 C.C. Axial-piston motor, Speed regulated

- Max speed: 3400 R.P.M. from 68 L.P.M. oil flow
- Optional direct- drive silent-pack Perkins diesel engine
- Optional 415V, 3-Phase 15 kW 2-pole electric drive motor
- 12" Flexi Air Hose connections to Vacuum Head & Lights Recovery Cage
- Forklift pockets fitted for ease of movement

AIR VAC 1200

Lights Recovery Cage



- Cubic Capacity: - 2,350m³
- Weight: - 295 Kg
- Forklift pockets fitted for ease of movement
- Quick-release latches for easy emptying
- Height: - 2315mm
- Width: - 1165mm
- Depth: - 1165mm
- 12" Flexi Air Hose connection to Suction Fan Unit